



**LT3000 / LT4000 /
LT4000SR / WINCH2GO /
WINCH2GO SR SMALL
PARTS KIT**

PART NUMBER:

90-42762

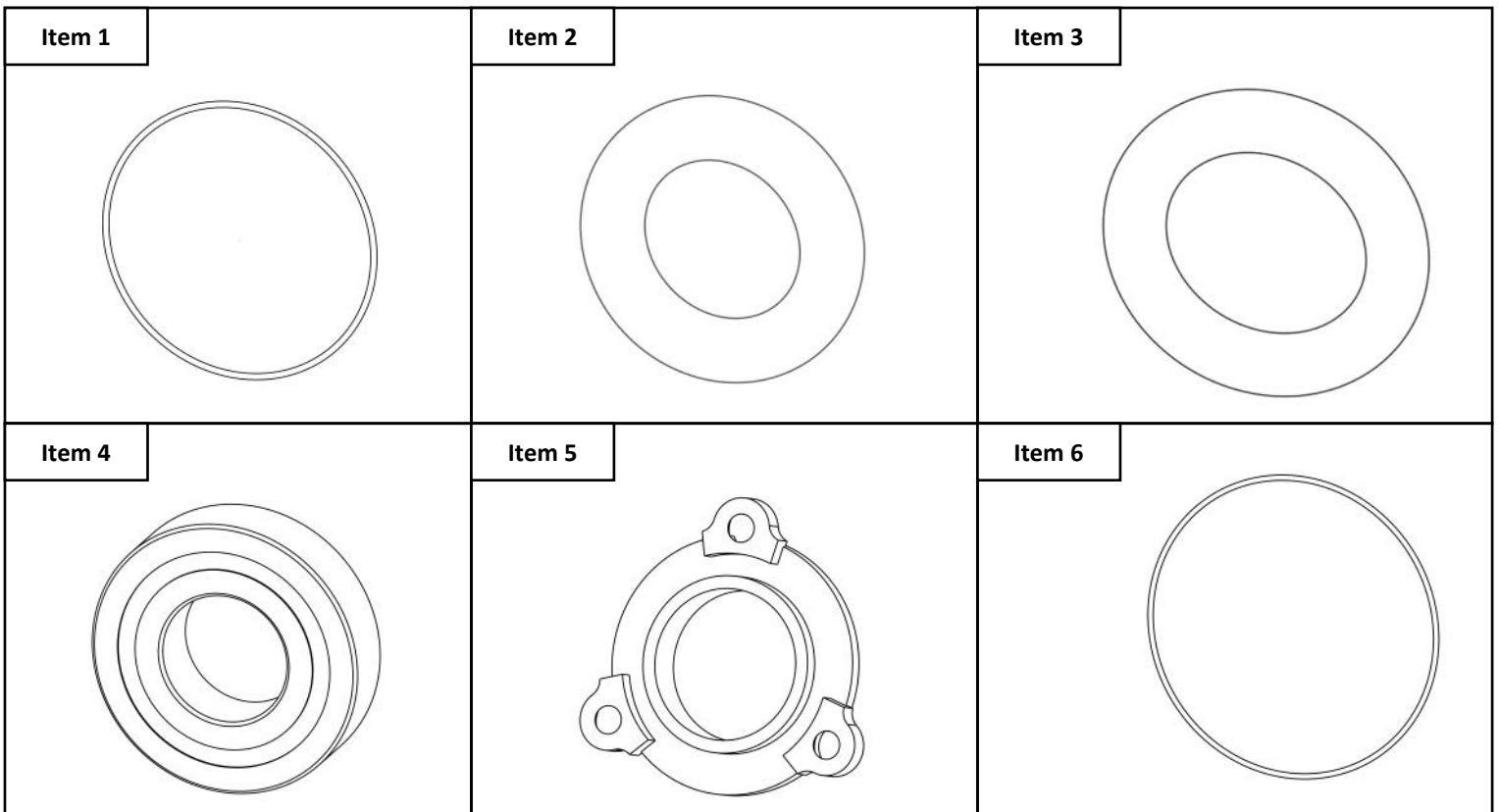


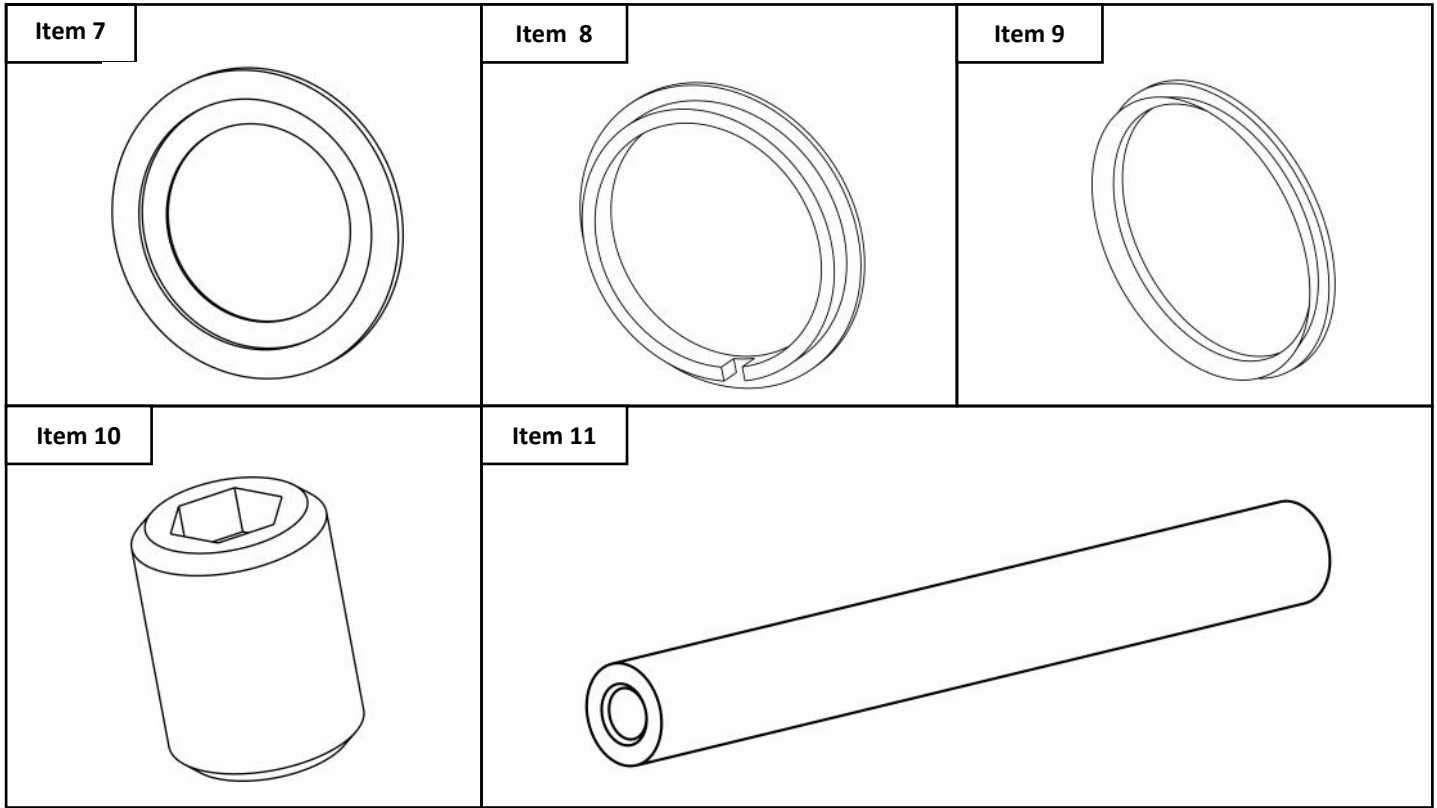
**SAVE THESE
INSTRUCTIONS**

CONTENTS

ITEM	QUANTITY	DESCRIPTION
1	2	MOTOR O-RING
2	2	MOTOR BOLT O-RING
3	2	MOTOR TERMINAL O-RING
4	1	BALL BEARING
5	1	1ST STAGE PLANETARY BUSHING
6	2	DRUM SUPPORT O-RING
7	1	GEARBOX BUSHING
8	2	DRUM BEARING
9	2	DRUM SEAL
10	1	M6 SET SCREW
11	2	TIE BAR

ANTI-SEIZE LUBRICANT MUST BE USED ON ALL STAINLESS STEEL FASTENERS TO PREVENT THREAD DAMAGE AND GALLING

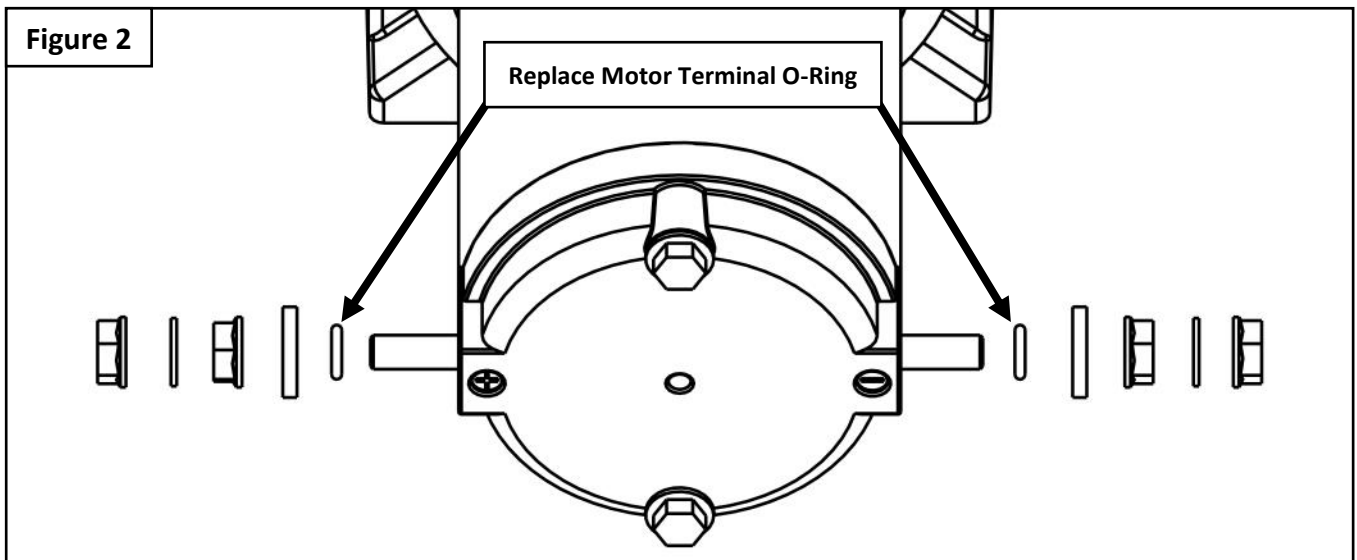
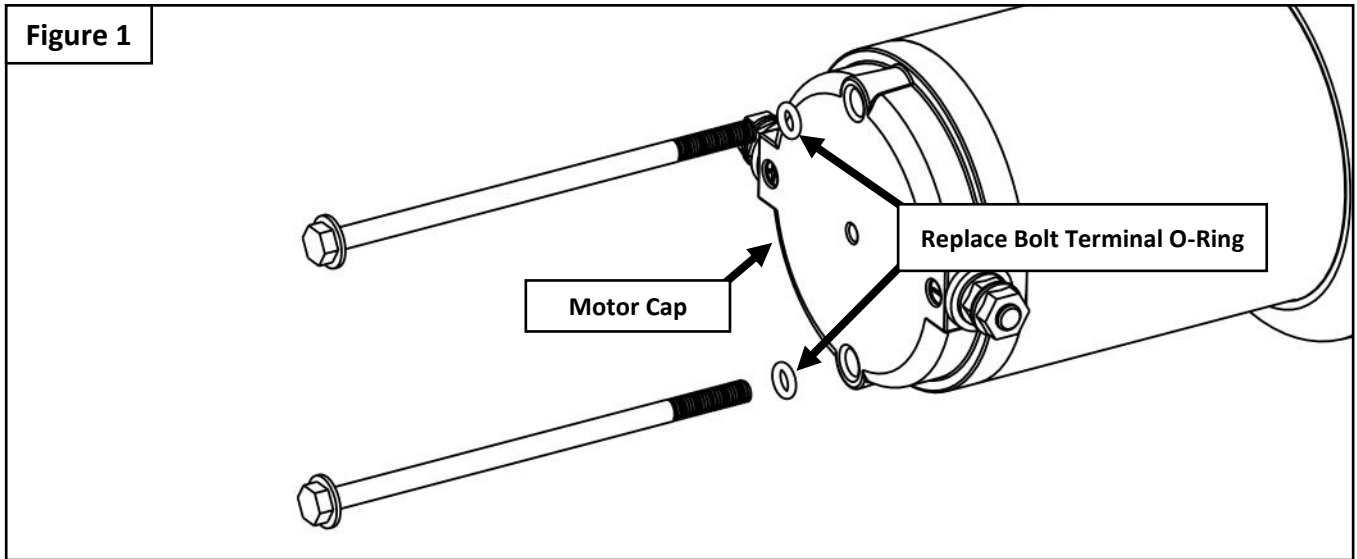




INSTALLATION INSTRUCTIONS

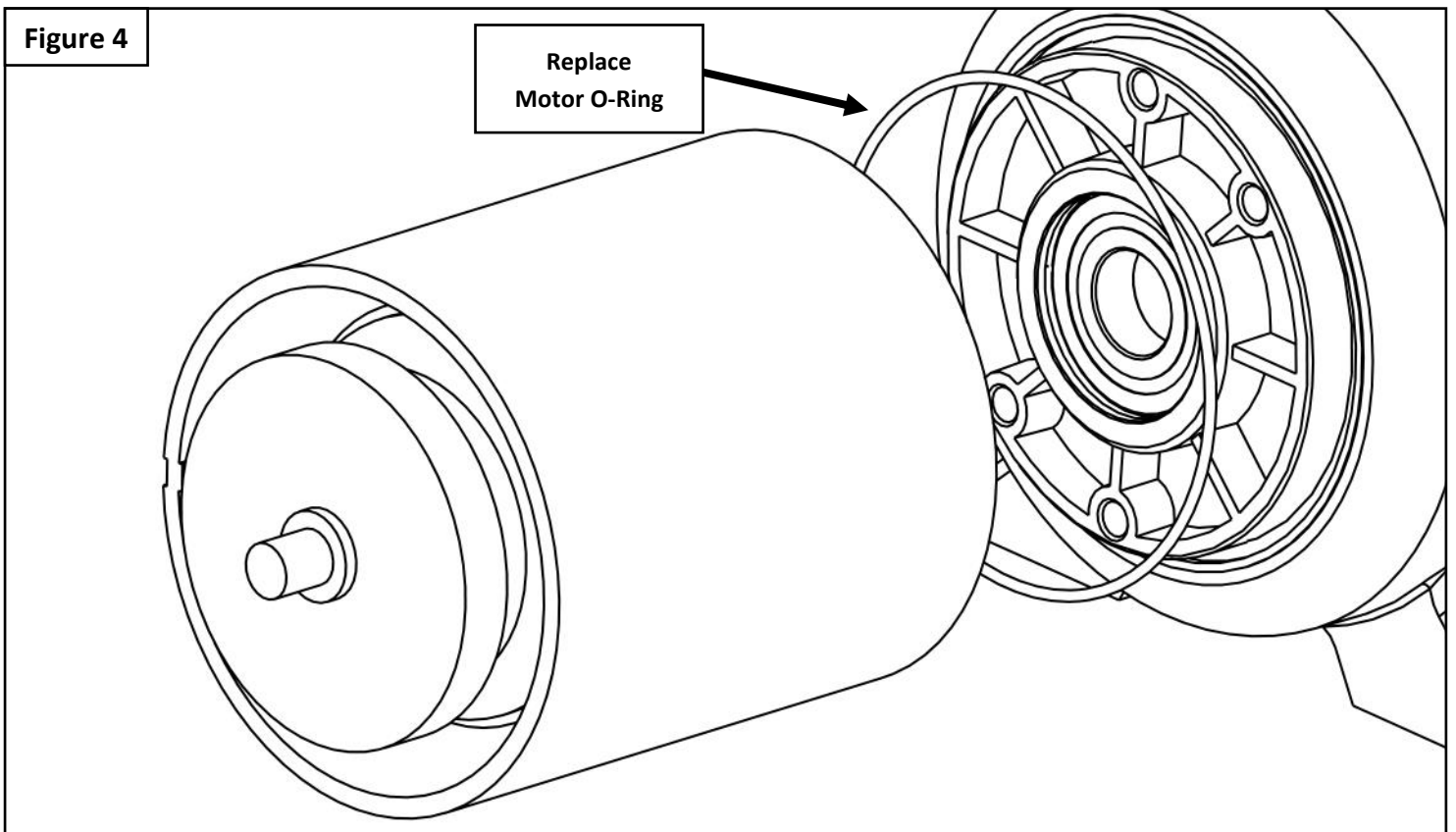
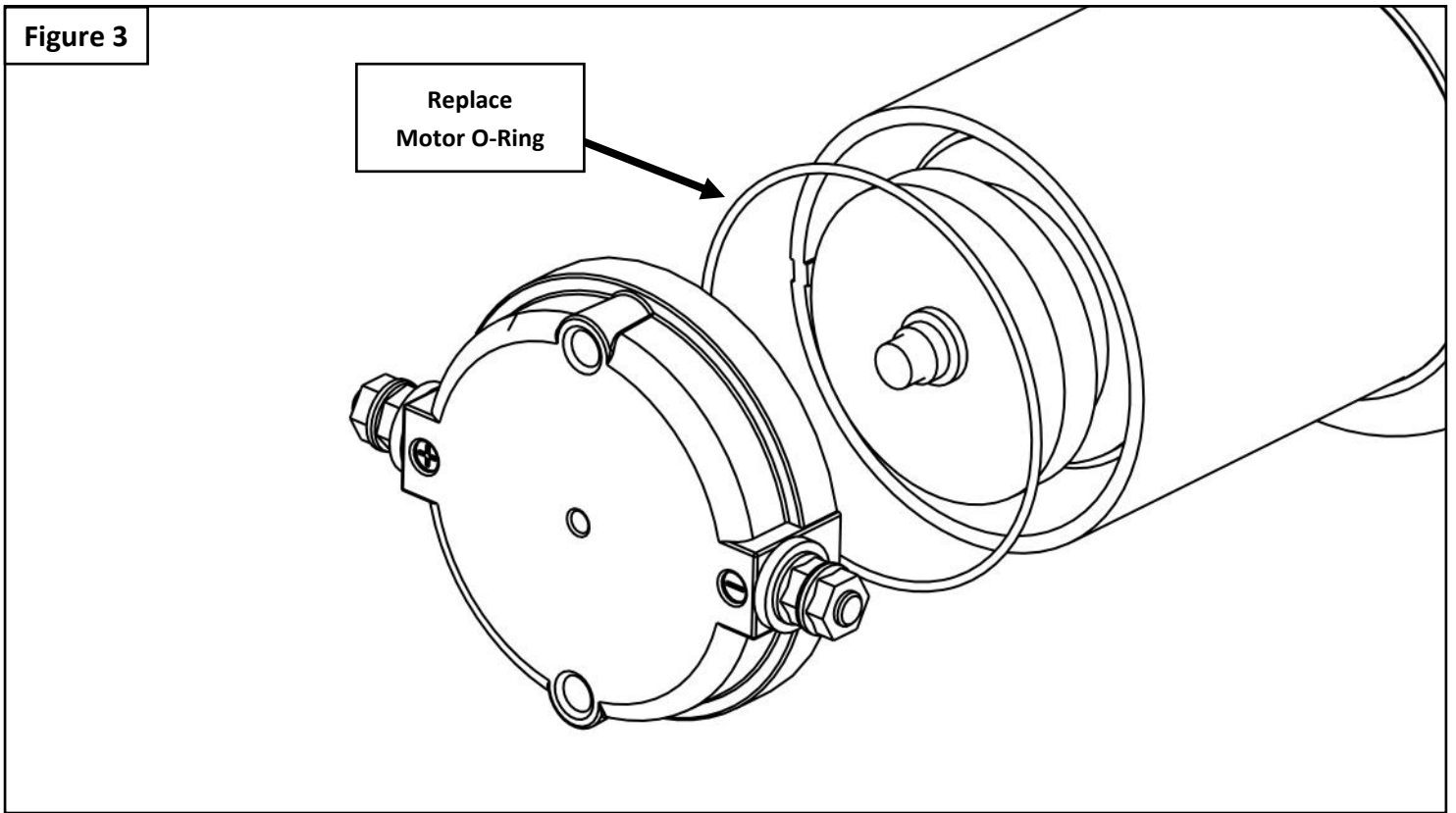
1. Remove contents from box, verify if all parts listed are present and free from damage. **Failure to identify damage before installation could lead to a rejection of any claim.**
2. Carefully read and understand all instructions before attempting installation. **Ensure that all mounting hardware is torqued to specifications prior to use.**

3. Disconnect the power cable and ground cable from the battery.
4. Remove the two bolts from the end of the motor. See **Figure 1**.
5. Remove the motor cap.
6. Remove all hardware and the motor cables from each motor terminal.
7. Replace the two Motor Terminal O-Rings (**Item 3**). See **Figure 2**.
8. Reinstall the motor terminal hardware.
9. Replace the two Motor Bolt O-Rings (**Item 2**). See **Figure 1**.



10. Replace the Motor O-Ring (**Item 1**) between the motor and the motor cap. See **Figure 3**.

11. Separate the motor from the drum support and replace the second Motor O-Ring (**Item 1**). See **Figure 4**.



12. Remove and replace the ball bearing (**Item 4**) located in the motor end drum support . See **Figure 5**.
13. Remove the two bolts holding the drum support to the tie bars. See **Figure 6**.
14. Reassemble the motor.

Figure 5

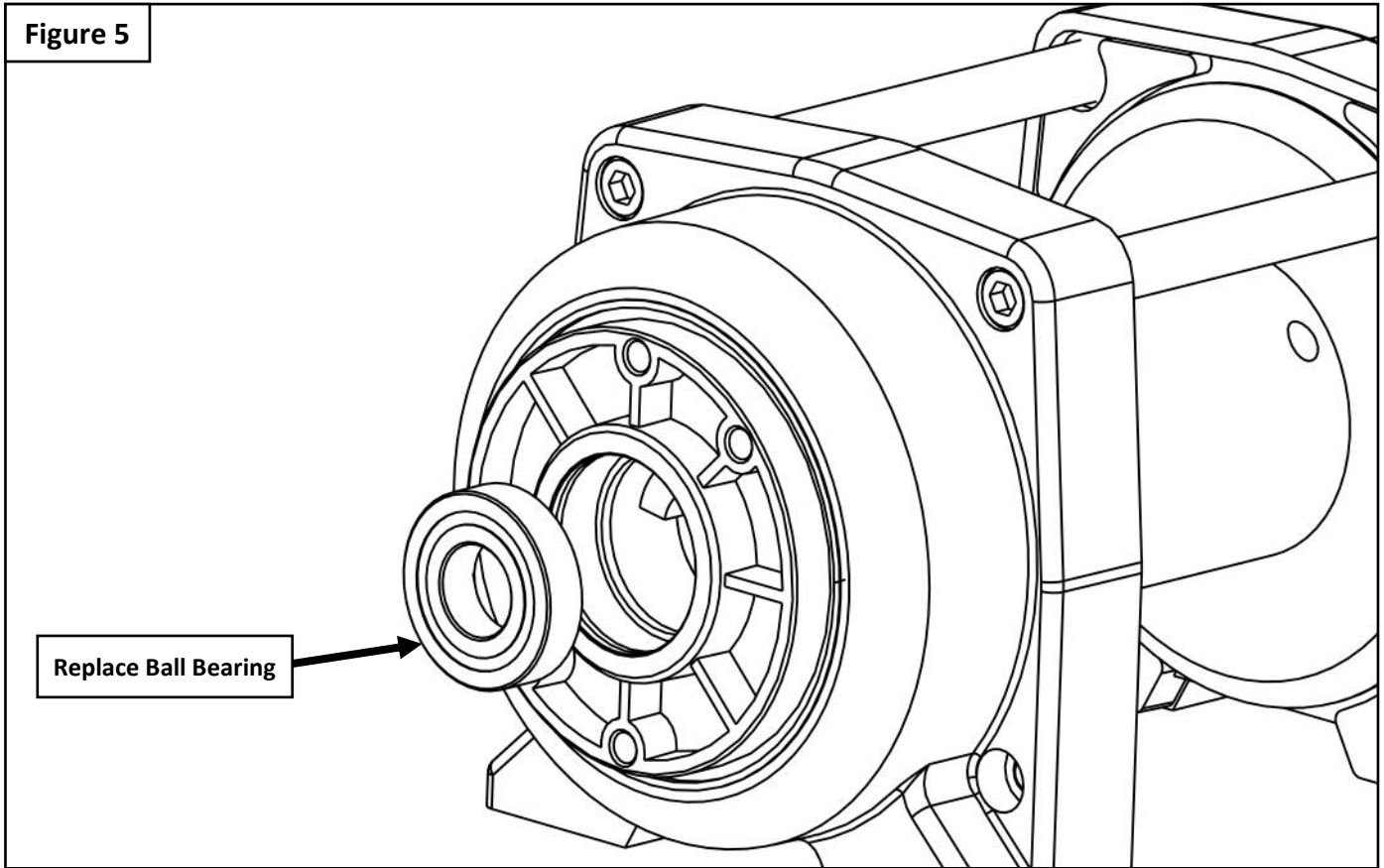
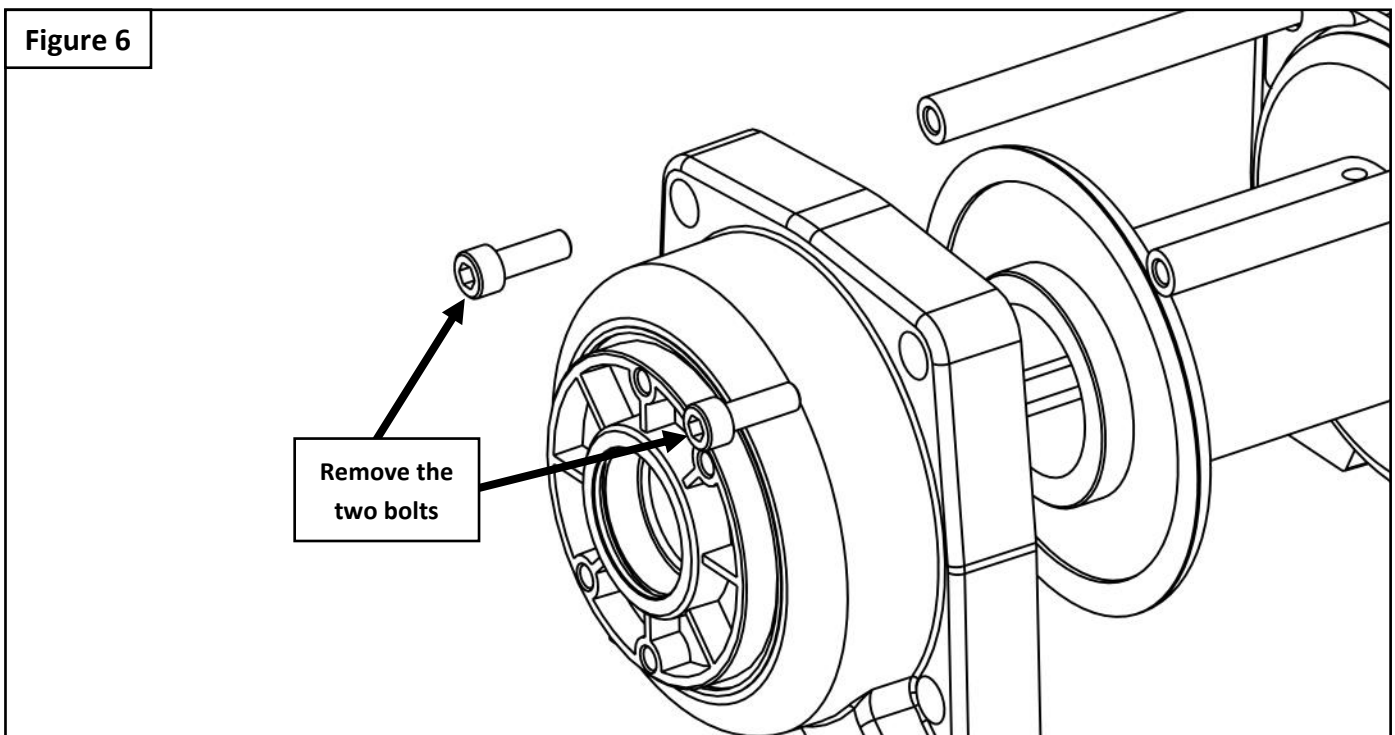


Figure 6



15. Remove and replace the Drum Bearing (**item 8**) and Drum Seal (**item 9**) located on the motor end drum support.
See **Figure 7**.

16. Remove the 1st stage planetary cover by removing the two bolts holding it in place. See **Figure 8**.

Figure 7

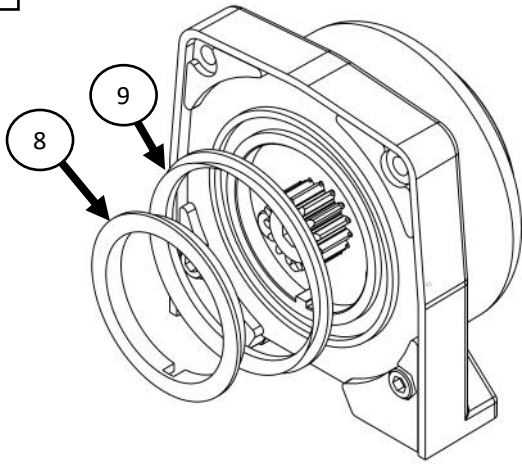
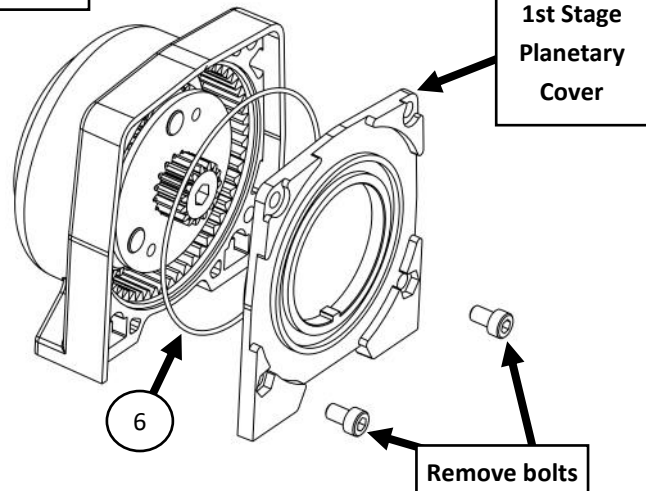


Figure 8



17. Remove the 1st stage planetary gearset. See **Figure 9**.

18. Remove the original 1st Stage Planetary Bushing by removing the three flat head bolts holding it in place. See **Figure 9**.

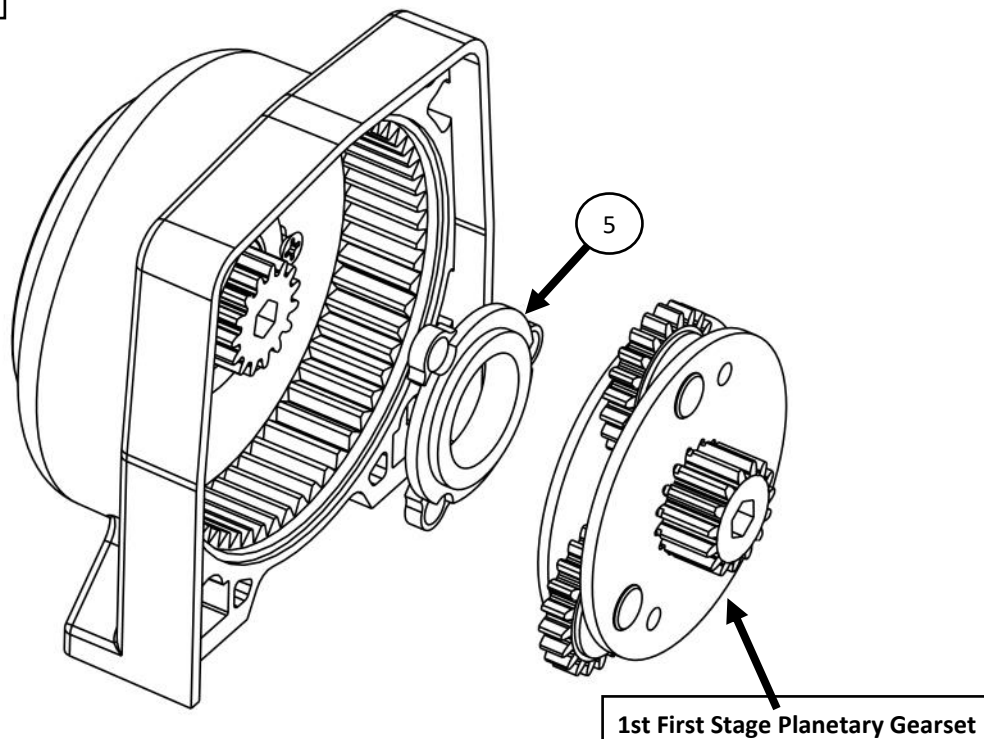
19. Install the replacement 1st Stage Planetary Bushing (**item 5**) using the hardware removed in the previous step.

20. Reinstall the 1st stage planetary gearset.

21. Install the replacement Drum Support O-Ring (**item 6**). See **Figure 8**.

22. Reinstall the 1st stage planetary cover.

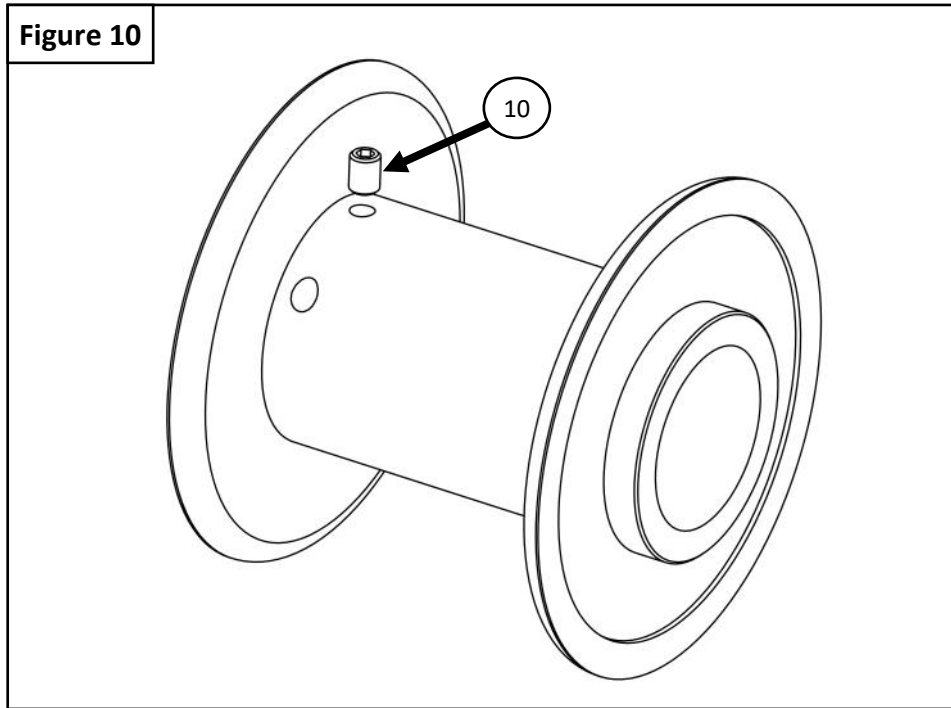
Figure 9



23. Remove and replace the M6 Set Screw (**item 10**) in the drum. See **Figure 10**.

24. Remove the tie bars from the gearbox end of the winch.

Figure 10



25. Remove and replace the Drum Bearing (**item 8**) and Drum Seal (**item 9**). See **Figure 11**.

26. Remove the gearbox cover by removing the two bolts holding it in place. See **Figure 12**.

Figure 11

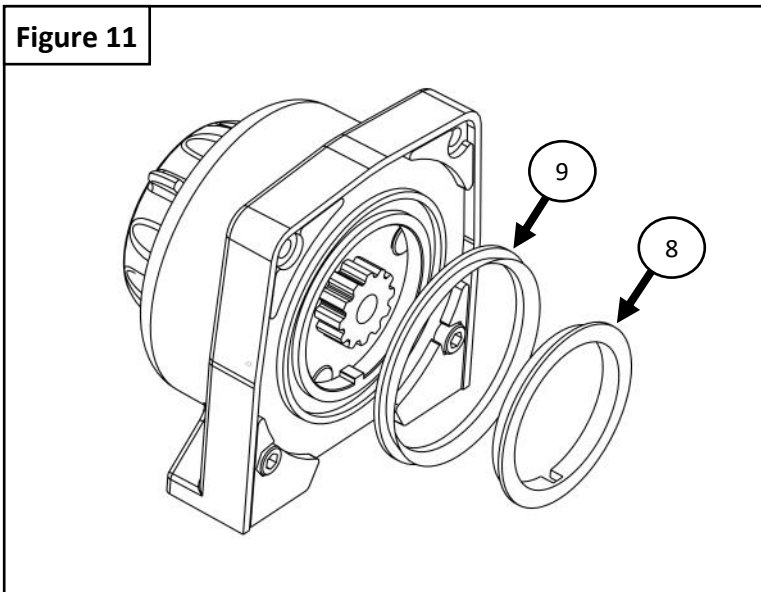
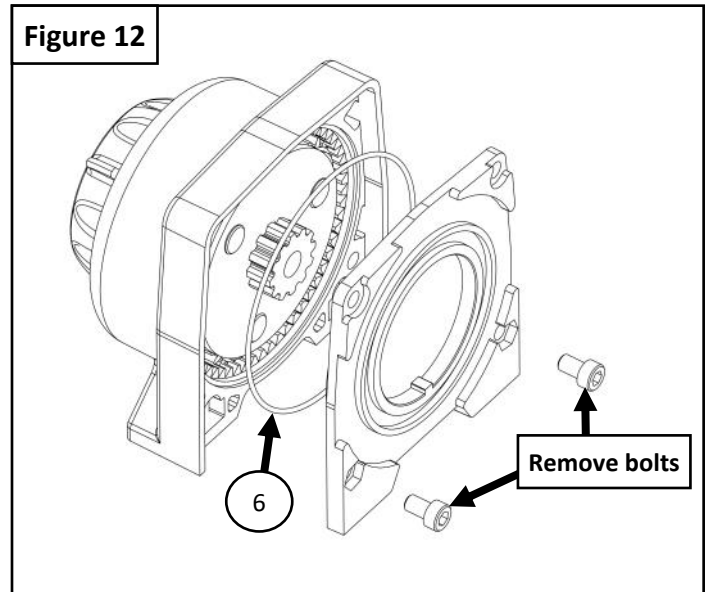
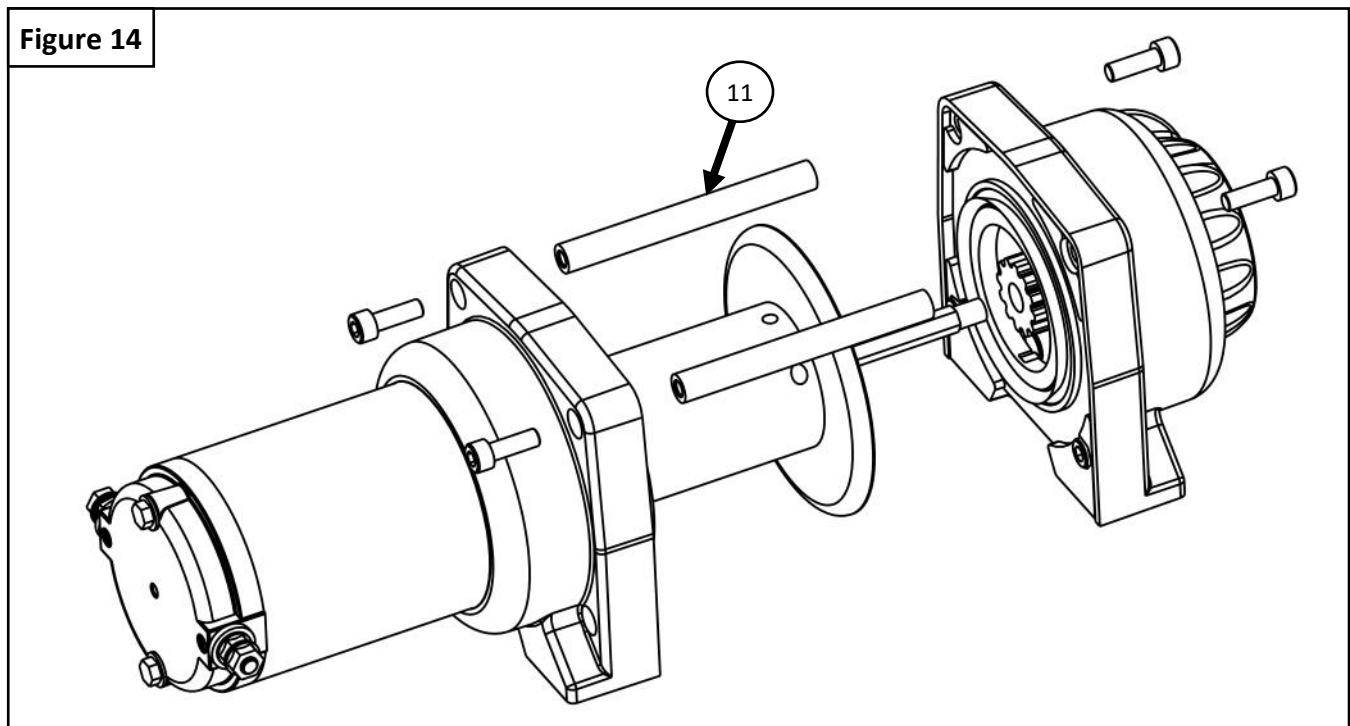
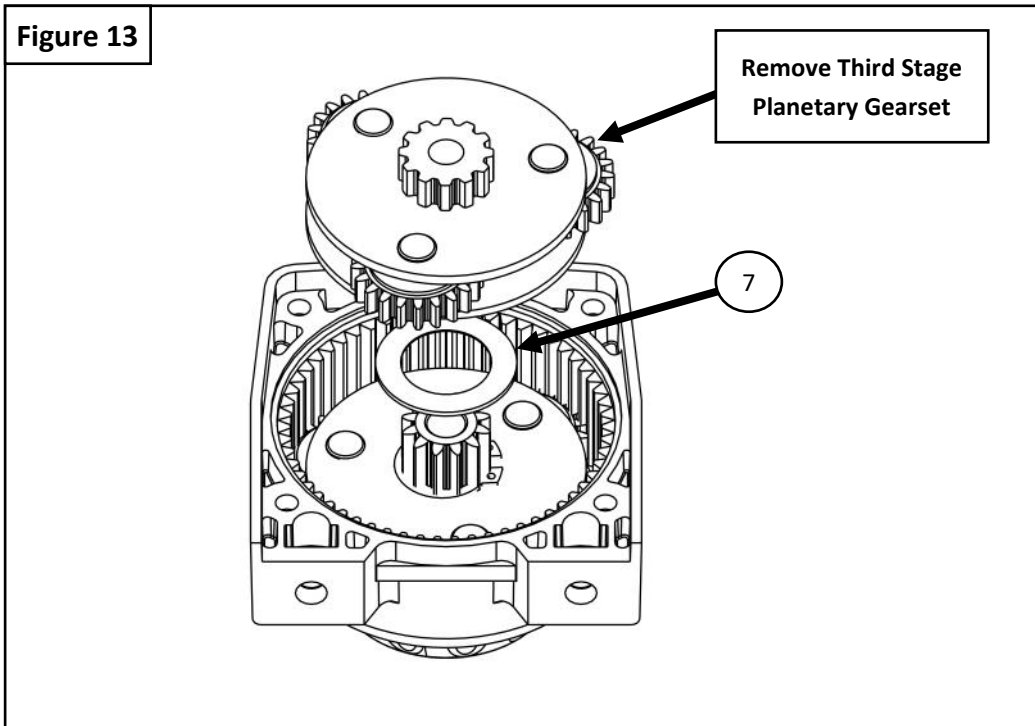


Figure 12



27. Remove the 3rd stage planetary gearset. See **Figure 13**.
28. Remove and replace the Gearbox Bushing (**item 7**).
29. Reinstall the 3rd stage planetary gearset.
30. Install the replacement Drum Support O-Ring (**item 6**). See **Figure 12**.
31. Reinstall the gearbox cover.
32. Reassemble the winch using the replacement Tie Bars (**item 11**). See **Figure 14**.



WARNINGS

Failure to follow these instructions could lead to death, personal injury, and / or property damage.

FASTENERS:

All SUPERWINCH supplied fasteners must be utilized and installed in accordance with the installation instructions and apply torque to the specifications as defined. DOUBLE CHECK ALL FASTENERS BEFORE INITIAL USE, AND PERIODICALLY IN THE FUTURE TO ENSURE PROPER FUNCTION AND SAFETY.

EYE PROTECTION:

ALWAYS WEAR SAFETY GLASSES OR GOGGLES DURING THE INSTALLATION PROCESS TO AVOID PERSONAL INJURY.

FOR CALIFORNIA RESIDENTS ONLY-PROP 65 WARNING:

Some products may contain chemicals such as DEHP, which can cause cancer, birth defects or other reproductive harm. For more info go to www.p65warnings.ca.gov



For more information on this and other products,
or to be put in contact with a Superwinch sales
rep or distributor, call (800) 323- 2031
or email info@superwinch.com

SUPERWINCH
320 W. COVINA BLVD.
SAN DIMAS, CA 91773

© 2019 SUPERWINCH®, Superwinch®, and S Superwinch® (design) are registered trademarks of Superwinch Inc. in the United States and/or other countries.