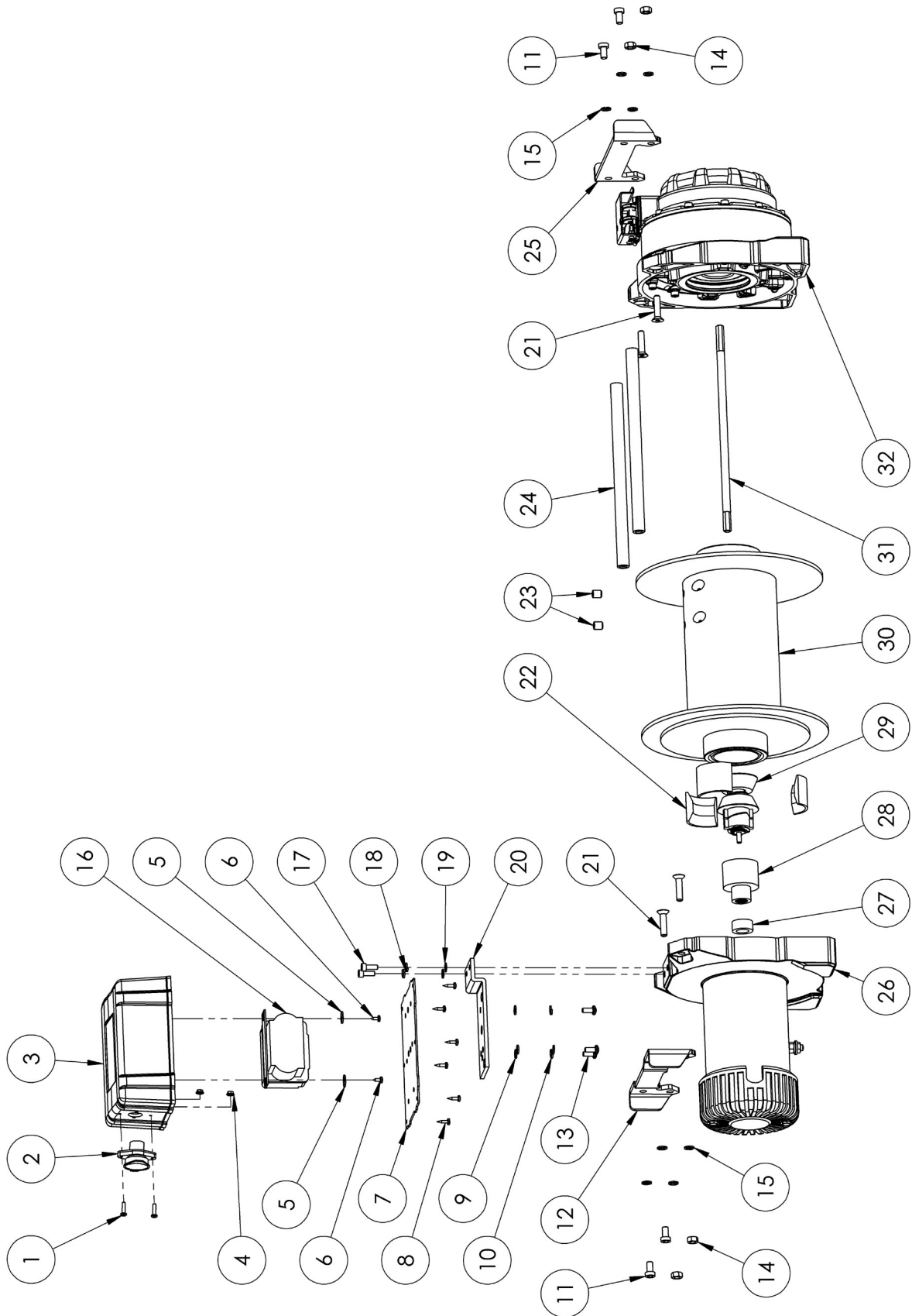


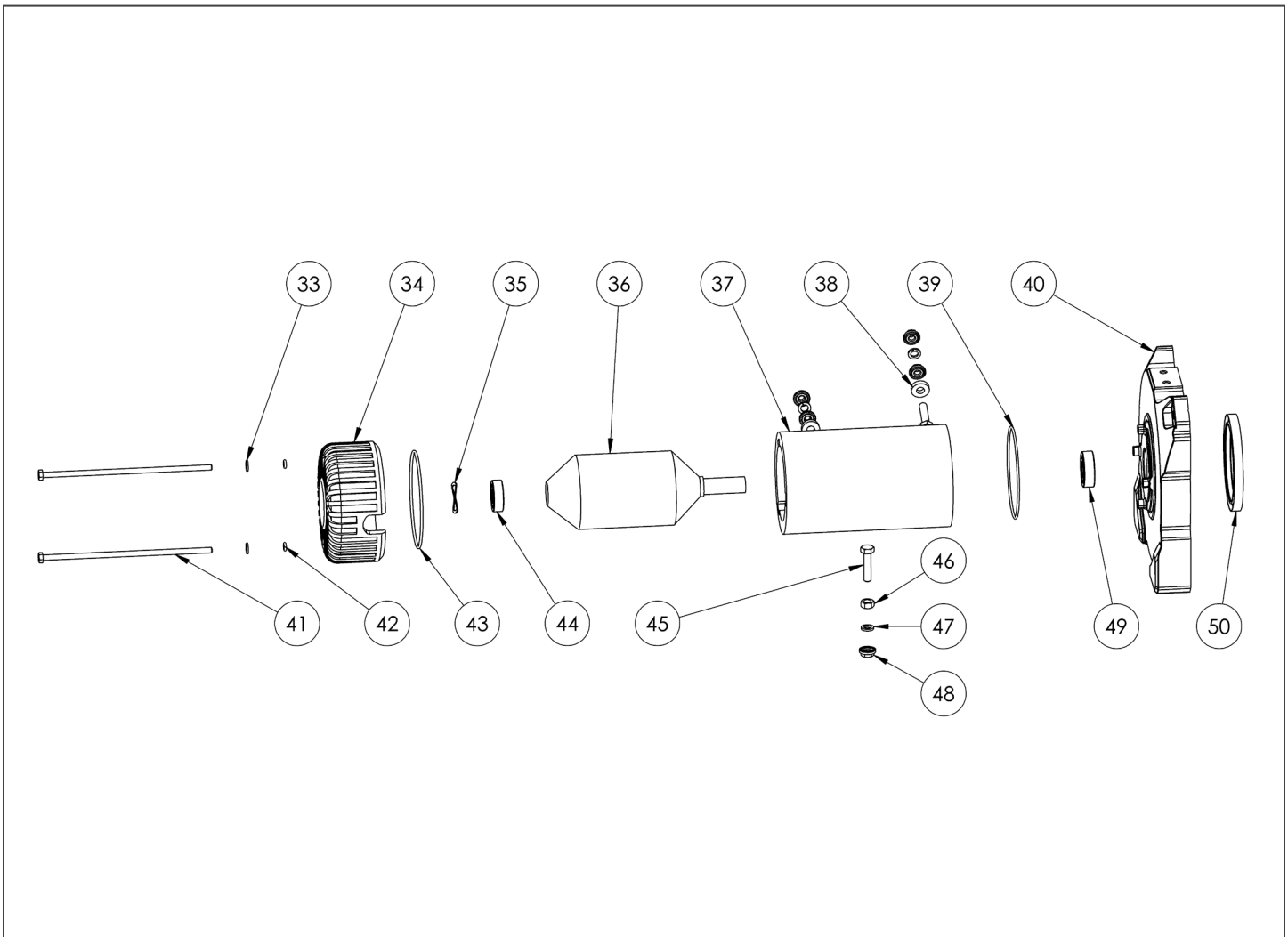
**TIGER SHARK 66.7kN
SERVICE PARTS****TIGER SHARK
66.7kN EN 24V**

DESCRIPTION	PART NUMBER	CONTENTS
Power Cables	90-42661	Not Shown
Contactors	90-42747	16
Control Box	90-42748	1, 2, 3, 4, 5, 6, 7, 8, 9, 10, 13, 16, 20
Clutch Assembly	90-42649	57, 58, 61, 62, 63, 64, 65, 66
Hook Assembly	90-42655	Not Shown
Motor Assembly	90-42749	33, 34, 35, 36, 37, 38, 39, 41, 42, 43, 44, 45, 46, 47, 48, 49
Small Parts Kit Assembly	90-42652	22, 23, 29, 35, 39, 42, 43, 44, 49, 50, 52, 56, 63, 65, 74
Remote Socket Assembly	90-24581	Not Shown
Roller Fairlead (Not Shown)	S100507	Not Shown
Wired Remote Control (Not Shown)	2275	Not Shown

ITEM NO.	PART NUMBER	DESCRIPTION	QTY.
1	1518000-1-10-19	Screw, Pan Head Phillips M4-0.7 X 16mm	2
2	1518000-1-10-4	Socket	1
3	1518000-1-10-3	Lid, Control Box	1
4	1518000-1-10-20	Serrated Flange Nut, M4-0.7	2
5	1518000-1-10-22	Retaining Plate	2
6	1518000-1-10-21	Screw, Pan Head Phillips	2
7	1518000-1-10-1	Plate, Control Box Base	1
8	1518000-1-10-18	Screw, Pan Head Phillips	6
9	1515000-1-10-16	Flat Washer, M6	3
10	1515000-1-10-15	Split Lock Washer, M6	3
11	1518100-1-11	Screw, Socket Head M8-1.25 X 15mm	4
12	1518100-1-15	Bracket, Tie Bar "B"	1
13	1515000-1-10-14	Screw, Pan Head Phillips M6 X 13mm	3
14	1518100-1-13	Hex Nut, M8-1.25	4
15	1518000-1-12	Split Lock Washer, M8	8
16	1518100-2-1	Contactora, 24V	1
17	N/A	Screw, Socket Head M6-1.0 X 16mm	2
18	N/A	Split Lock Washer, M6	2
19	N/A	Flat Washer, M6	2
20	1518000-1-10-2	Bracket, Control Box	1
21	1518100-1-12	Screw, Flat Head M8-1.25 X 35mm	4
22	1518000-1-7	Brake Pad	3
23	1518100-1-10	Screw, Set M10-1.5 X 12mm	2
24	1518100-1-3	Tie Bar	2
25	1518100-1-14	Bracket, Tie Bar "A"	1
26	1518100-1-1	Motor End Assembly	1
27	1515000-1-14	Spacer, Motor Adapter	1
28	1518000-1-8	Adapter, Brake-Motor	1
29	1518000-1-6	Cone Brake Actuator Assembly	1
30	1518100-1-2	Drum	1
31	1518000-1-5	Drive Shaft	1
32	1518100-1-9	Gearbox End Assembly	1



ITEM NO.	PART NUMBER	DESCRIPTION	QTY.
33	1518000-1-1-11	Flat Washer, M6	2
34	1518000-1-1-9	Motor Cap	1
35	1515000-1-1-12	Spacer, Ball Bearing	1
36	1518100-1-1-12	Rotor	1
37	1518100-1-1-11	Stator	1
38	1518000-1-1-14 1518000-1-1-15 1518000-1-1-16	Insulator, Red Insulator, Black Insulator, Yellow	1 1 1
39	1518000-1-1-8	Motor Seal	1
40	1518100-1-1-2	Drum Support, Motor End	1
41	1518000-1-1-10	Screw, Hex Head M6-1.0 X 190mm	2
42	1518000-1-1-12	O-Ring, Motor Bolt	2
43	1518000-1-1-81	Motor End Seal	1
44	1515000-1-1-11	Ball Bearing	1
45	1518000-1-1-13	Motor Terminal	4
46	1518000-1-1-17	Hex Nut, M8-1.25	1
47	1518000-1-1-19	Split Lock Washer, M8	4
48	1518000-1-1-18	Serrated Flange Nut, M8	7
49	1518000-1-1-4	Ball Bearing, Motor	1
50	1518000-1-1-3	Seal, Drum Support	1



ITEM NO.	PART NUMBER	DESCRIPTION	QTY.
5	1518000-1-10-22	Retaining Plate	2
50	1518000-1-1-3	Seal, Drum Support	1
51	1518000-1-9-14	Screw, Socket Head M6-1.0 X 30mm	23
52	1518000-1-9-2	Face Seal	2
53	1518000-1-9-12	3rd Stage Planetary Assembly	1
54	1518000-1-9-11	2nd Stage Planetary Assembly	1
55	1518000-1-9-10	1st Stage Planetary Assembly	1
56	1518000-1-9-9	Bushing, Gear Box	1
57	1518000-1-9-135	Retaining Pin, Clutch	1
58	1518000-1-9-136	Snap Ring, 4mm OD	2
59	1518000-1-9-21	Screw, Socket Head M4 SEMS	4
60	1518100-1-3-1	Safety Latch	1
61	1518000-1-9-131	Clutch Handle	1
62	1518000-1-9-132	Clutch Mounting Plate	1
63	1518000-1-9-137	Gasket, Clutch	1
64	1518000-1-9-138	Washer, Clutch	1
65	1518000-1-9-134	Spring, Clutch	1
66	1518000-1-9-133	Clutch Pin	1
67	1518000-1-9-15	Splitlock Washer, M6	23
68	1518100-1-9-1	Drum Support, Gearbox End	1
69	1518000-1-9-3	Ring Gear, 3rd Stage	1
70	1518000-1-9-22	Screw, Pan Head Phillips M4-0.5 X 8mm	2
71	1518000-1-9-4	Ring Gear, 2nd Stage	1
72	1518000-1-9-5	Ring Gear, 1st Stage	1
73	1518000-1-9-6	Sun Gear, 1st Stage	1
74	90-42652-11	Spacer Plate	1
75	1518000-1-9-7	Gearbox	1

